

DEPARTMENT 42  
FINE ARTS  
MARIE TIBBET, SUPERINTENDENT  
616-848-9280

IMPORTANT RULES:

1. Please deliver all entries to the fairgrounds on Thursday, July 20 or Friday, July 21 from 5:00pm to 7:00pm under the grandstand.
2. Exhibitors may have up to six entries, but no article shall compete in more than one class.
3. All items must be the original work of the exhibitor produced within the last three years and not previously submitted for this exhibit.
4. Oils and acrylics must have at last a strip framing; drawing and watercolors must be covered, matted and framed. All must be dry and ready to hang securely with wire and hooks. Saw tooth hangers and paper-hook stick-ons are not acceptable and will not be judged.
5. Articles must be properly identified with the exhibitor's name, address, phone, division, class and category.
6. Entries must be picked up Sunday, July 30 from 9:00am to 11:00am.

SPECIAL AWARD:

A BEST IN SHOW RIBBON WILL BE PRESENTED TO THE BEST ENTRY

DIVISION A – KINDERGARTEN

Premiums: 1<sup>st</sup> - \$5.00, 2<sup>nd</sup> - \$3.00, 3<sup>rd</sup> - \$1.50

Class

- 7201 Drawing – pencil, crayon, colored pencil, ink (no paint)
- a. Portrait
  - b. Animals
  - c. Landscape
  - d. Seascape
  - e. Still Life
  - f. Architecture/Buildings
- 7202 Paintings (oil, acrylic, watercolor)
- 7203 Clay Sculpture
- 7204 Mixed Media, Collages, Weaving



DIVISION B – GRADES 1 THROUGH 3

Premiums: 1<sup>st</sup> - \$5.00, 2<sup>nd</sup> - \$3.00, 3<sup>rd</sup> - \$1.50

Class

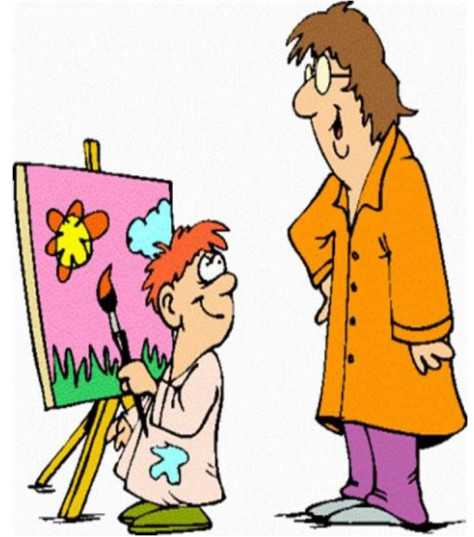
- 7205 Drawing – pencil, crayon, colored pencil, ink (no paint)
- a. Portrait
  - b. Animals
  - c. Landscape
  - d. Seascape
  - e. Still Life
  - f. Architecture/Buildings
- 7206 Paintings (oil, acrylic, watercolor)
- 7207 Clay Sculpture
- 7208 Mixed Media, Collages, Weaving

DIVISION C – GRADES 4 THROUGH 6

Premiums: 1<sup>st</sup> - \$5.00, 2<sup>nd</sup> - \$3.00, 3<sup>rd</sup> - \$1.50

Class

- 7209 Drawing – pencil, crayon, colored pencil, ink (no paint)
- 7210 Paintings (oil, acrylic, watercolor)
- 7211 Mixed Media, Collages, Weaving
- 7212 Sculpture
- 7213 Pottery, Ceramics



DIVISION D – GRADES 7 THROUGH 9

Premiums: 1<sup>st</sup> - \$5.00, 2<sup>nd</sup> - \$3.00, 3<sup>rd</sup> - \$1.50

Class

- 7214 Drawings, Black & White
- 7215 Drawings, Colored
- 7216 Watercolor, Tempera
- 7217 Acrylic
- 7218 Oil
- 7219 Mixed Media, Collages, Weaving
- 7220 Sculpture
- 7221 Pottery, Ceramics
- 7222 Prints

DIVISION E – GRADES 10 THROUGH 12

Premiums: 1<sup>st</sup> - \$7.00, 2<sup>nd</sup> - \$5.00, 3<sup>rd</sup> - \$3.00

Class:

Oil, Acrylic

- 7223 Portrait
- 7224 Landscape
- 7225 Waterscape
- 7226 Still Life, Flora
- 7227 Miscellaneous

Watercolor, Tempera

- 7228 Portrait
- 7229 Landscape
- 7230 Waterscape
- 7231 Floral

- 7232 Miscellaneous

Drawing (pen, pencil, charcoal, crayon, etc.)

- 7233 Portrait
- 7234 Landscape
- 7235 Waterscape
- 7236 Still Life, Floral
- 7237 Miscellaneous

Sculpture

- 7238 Clay, Fired
- 7239 Wood, Metal, Plastic
- 7240 Plaster, Paper-Mache
- 7241 Stone, Glass
- 7242 Pottery Ceramics

**DIVISION F – ADULTS**

Premiums: 1<sup>st</sup> - \$10.00, 2<sup>nd</sup> - \$7.50, 3<sup>rd</sup> - \$5.00

Class:

Oil

- 7243 Portrait
- 7244 Landscape
- 7245 Seascape, Marine
- 7246 Wildlife, Animals
- 7247 Still Life, Floral
- 7248 Abstract
- 7249 Miscellaneous

**DIVISION F – ADULTS (con't)**

Premiums: 1<sup>st</sup> - \$10.00, 2<sup>nd</sup> - \$7.50, 3<sup>rd</sup> - \$5.00

Class:

Acrylic



- 7250 Portrait
- 7251 Landscape
- 7252 Seascape
- 7253 Wildlife, Animals
- 7254 Still Life, Floral
- 7255 Abstract
- 7256 Mixed Media
- 7257 Miscellaneous

#### Watercolor

- 7258 Portrait
- 7259 Landscape
- 7260 Seascape
- 7261 Wildlife, Animals
- 7262 Still Life, Floral
- 7263 Abstract
- 7264 Mixed Media
- 7265 Miscellaneous

#### Drawing (pen, pencil, charcoal, crayon, etc.)

- 7266 Portrait
- 7267 Landscape
- 7268 Seascape, Marine
- 7269 Wildlife, Animals
- 7270 Still Life
- 7271 Abstract
- 7272 Mixed Media
- 7273 Miscellaneous

#### Sculpture

- 7274 Clay, Fired
- 7275 Wood, Metal, Plastic
- 7276 Stone, Glass
- 7277 Miscellaneous

#### Pottery and Ceramics

- 7278 Hand-Built
- 7279 Wheel-Thrown

#### Mixed Media

- 7280 Soft (Yarns, String, Fabrics)
- 7281 Hard (Mosaics, Wood, Metal, Plastic)
- 7282 Paints

